

# Science - Reptiles



# Note to parents

This week we are focusing on reptiles. Use the PowerPoint to recap the reptile group with your child. Children then to draw and label one reptile (a lizard or tortoise).



Bearded dragon

# Reptile



Reptiles are cold blooded animals. They live on land and in water. Reptiles have scales, ear holes and dry skin. They lay eggs on land.



adder



saltwater  
crocodile



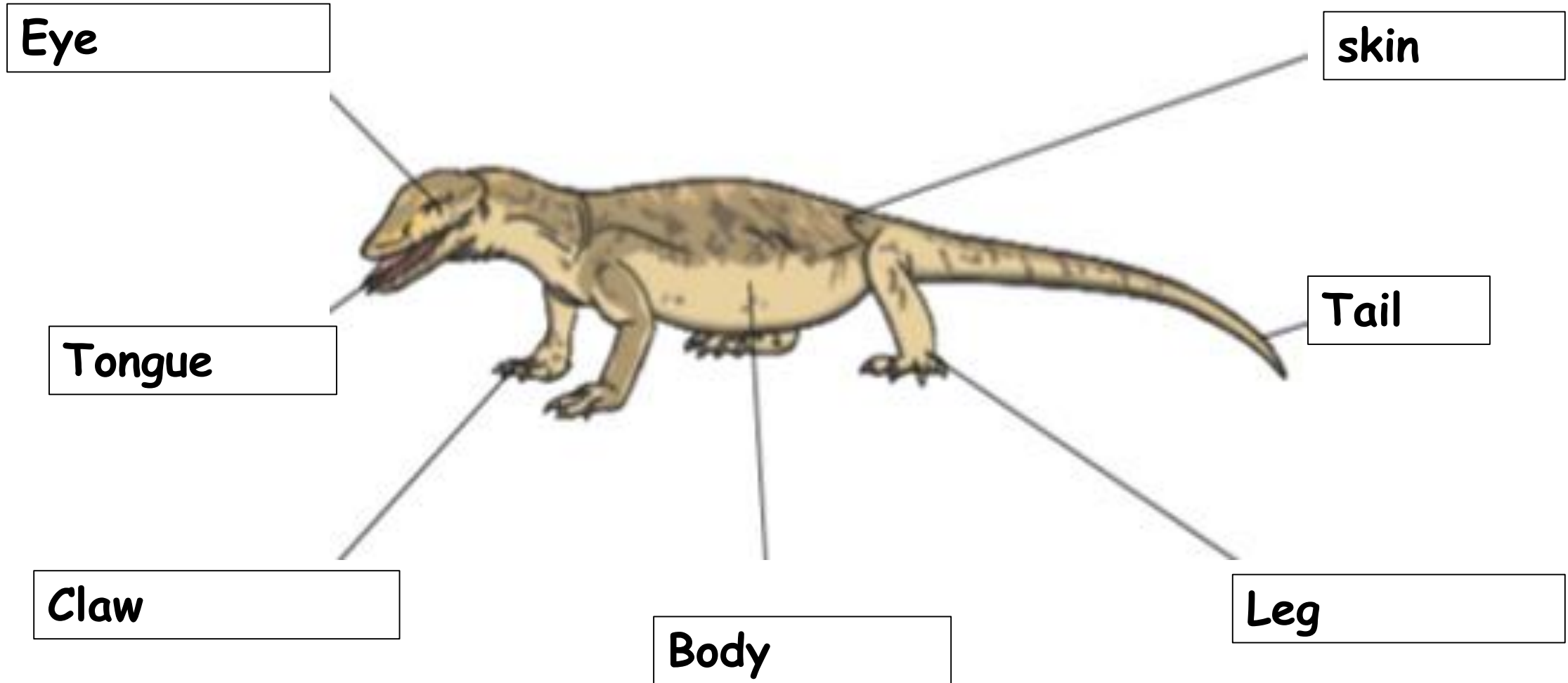
lizard

# Task - Draw and label a reptile

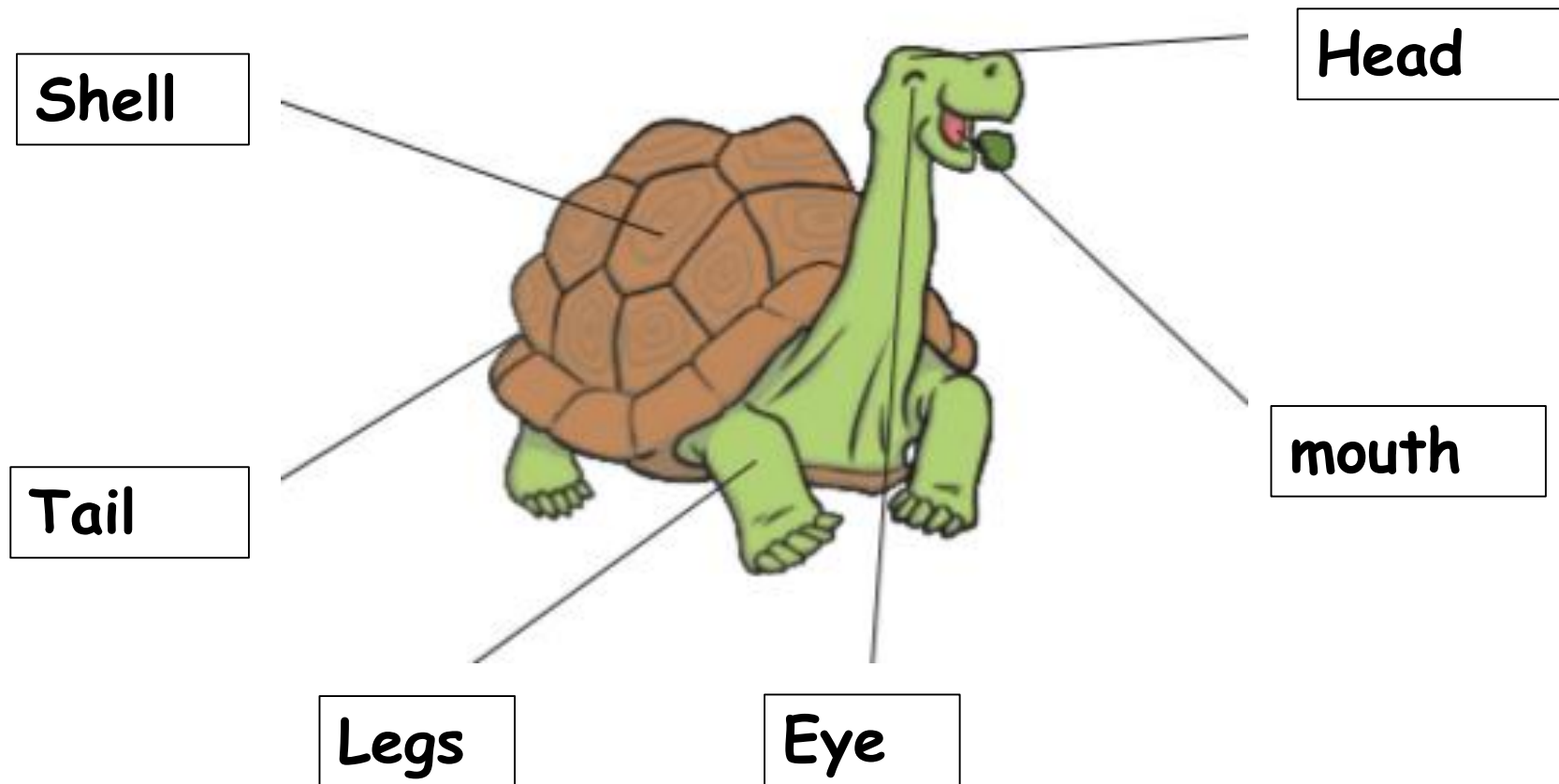
## Can you label a reptile?

Children to choose one reptile a lizard or a tortoise. Using the diagrams show your child the features of their chosen reptile. Children then to draw and label it or they can label the diagram provided.

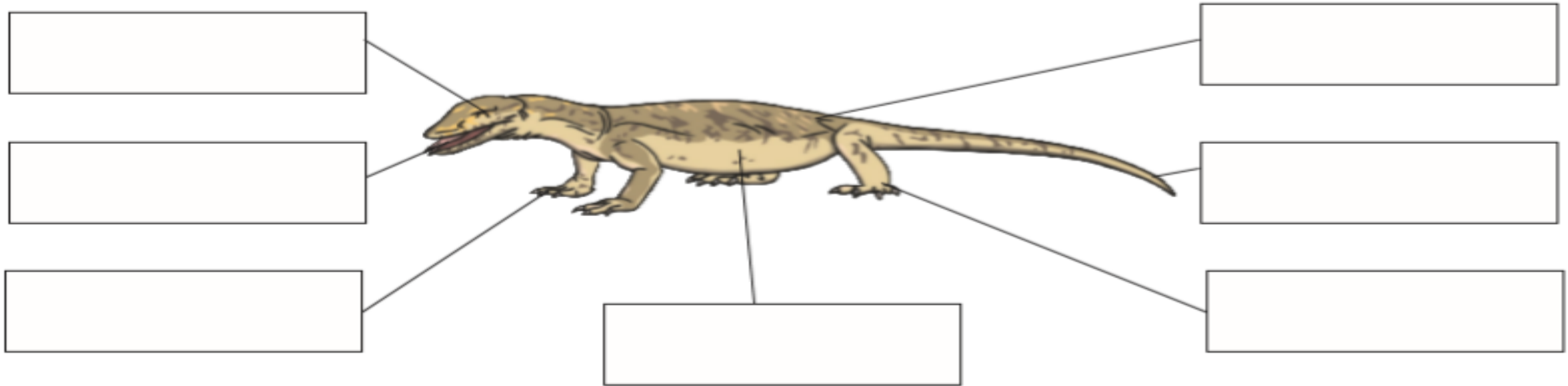
# Parts of a lizard



# Parts of a tortoise



# Can you label a lizard?



leg	tail	skin	body
eye	tongue	claw	



# Can you label a tortoise?

shell	head	mouth
legs	eyes	tail

